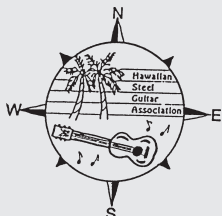


HSGA QUARTERLY

Published four times a year in Honolulu, Hawai'i
by the Hawaiian Steel Guitar Association

Volume 18, Issue 69

Winter 2002-03



Inside this Issue...

- 4 Waikiki Steel Guitar Schedule
- 4 Japan News from Tom Ikehata Tohma
- 5 "Steel Guitar Trends..." by Lorene Ruymar
- 6 "Some Thoughts" from Jerry Byrd
- 8 Members' Corner – News and Photos from Members
- 10 "Island of Palms" – Steel Arrangement
- 11 "Join Us in Maui" – Our Post-Convention Trip
- 12 Joliet 2002 Photo Gallery, Part One
- 13 Disc 'n' Data – Recordings Review
- 14 Coco Wire – News and Member Gossip
- 15 Meet Your "Freshman" Board Members
- 16 Tech Tips – Expert Info from John Tipka
- 17 Joliet 2002 Photo Gallery, Part Two
- 18 Buy & Sell – Member Advertisements
- 19 Closing Notes – Randy Oness and Lani Moe



Big fun after the Joliet Saturday Night Lu'au. (standing, left to right) Ian Ufton, Duke Ching, John Ely, Joanne Parker (?), Isaac Akuna, Kamaka Tom, L.T. Zinn; (seated, left to right) Leigh Bell, La Verne Ching, Maelani Wilcox, Julie and Bob Waters.

Joliet Convention 2002 Highlights

By Betty and Bo' Bahret

E Komo Mai, the Hawaiians would say, Welcome all to our HSGA.

With everyone's friends and next of kin, It's Ohana time – let the music begin!

On Wednesday, cars, vans, and limos brought many early arrivals and the lobby was more crowded than ever with all those beautiful, friendly faces that we hadn't seen for a whole year.

Virginia Grzadzinski (trooper that she is) limped in with a broken ankle. **Vern Cornwall** and **Wally Pfeifer** came to her rescue so "Ol' Big Foot" would like to say, "Thank

you for carrying in my suitcases and the big 'slapagut'."

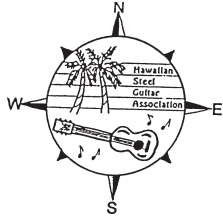
Bless their hearts, **Dick and Donna Weber**, **Wally and Alma Pfeifer**, and **Frank and Donna Miller** had put away their coordination and preparation dust rags and scrub buckets and wore wide smiles to welcome and register everyone. Registration at last count was around 120 (plus or minus a couple fingers on one hand).

Later that evening more than thirty of us enjoyed our initial get-together at David's Pasta before hitting the hay after long trips, resting up for the fun on day one.

Continued on Page 2

HSGA QUARTERLY

Volume 18, Issue 69



OFFICERS

Kamaka Tom, President
Tom Ikehata Toma, Vice President
Wayne Shishido, Secretary
Isaac Akuna, Treasurer

DIRECTORS

Betty Bahret, New York
Duke Ching, California
Joanne Hanawahine, Nevada
Gerald Ross, Michigan
Julie Waters, Kentucky

PAST PRESIDENT

Don Weber

DIRECTOR EMERITUS

Jerry Byrd

JAPAN COORDINATOR

Tom Ikehata Toma

QUARTERLY EDITORS

Brenda Shishido
John Ely

WEBMASTER

Gerald Ross <gbross@umich.edu>

STATEMENT OF PURPOSE

The Hawaiian Steel Guitar Association is a private foundation whose primary purpose is to develop a global network of players and lovers of traditional Hawaiian music and to encourage the study, teaching, performance, and manufacture of the Steel Guitar. Its primary financial goal is to provide scholarship assistance through donations and bequests to steel guitar students who demonstrate the ability and intent to become accomplished performers.

MEMBERSHIP

Membership is open to all steel guitar players and non-players around the world who support the promotion and perpetuation of the Hawaiian steel guitar. Annual dues are US\$26. The membership year begins July 1. Members receive the HSGA Quarterly and other group benefits. The Quarterly is mailed four times a year by U.S. Bulk Permit to the USA and by "Printed Matter" Surface to foreign addresses. Add the following amount to the annual dues for faster delivery: \$2 for domestic First Class or \$6 for Air Mail outside of North America. Members can obtain an Associate Membership for a spouse or family member at a cost of \$10, added to the annual dues; the specified person is entitled to discounts at certain HSGA functions (convention registration fees, for example).

SUBMIT LETTERS & EDITORIALS TO:

HSGA Quarterly, 45-600 Kamehameha Hwy, Kaneohe, HI 96744 USA. Tel: (808) 235-4742, Fax: (808) 235-9591, Email: <hsga@lava.net>, Website: <http://www.hsga.org>

JOLIET 2002 *Continued from Page 1*

Back at the hotel it was setup time for the sound system of the ever dependable **Doug Smith, Floyd Alexander, and Barbara Kuhns**. Barbara (had you heard?) won first place in the Old Time Fiddle Contest at Galox, Virginia this year. Saw away, Barb!

When the first-day curtain went up promptly at 9 AM, Bob Waters opened the ceremonies with the Hawaiian *Pule*. **Bob and Julie Waters, Duke Ching, and Kamaka Tom**, our new president, played a program of sweet and swingy tunes and songs that brought smiles to every face.

This year many more people requested to play, so instead of reducing the playing time for each person, **Art and Mae Lang** accommodated everyone with 30-minute performances by scheduling three additional sessions on Thursday evening. Ingenious!

Well look who's here! What a nice surprise it was to see **Dirk Vogel**, President of the Aloha Int'l Steel Guitar Club, here and on stage sharing his always pleasant playing and singing.

Chris Kennison, a first-time player at Joliet, displayed his very nice steel techniques and ended his session with two slack key selections, a double delicious program.

We were happy to see **Bill Schmiedlin** back and feeling better, and sure enjoyed his perfect playing and enthusiastic, booming Hawaiian vocals.

It takes two to make harmony and the "**Williams**" Twins always fill the bill. It was their first time to play on the Joliet stage and **Janis Crum and Joanne Parker** (rhythm

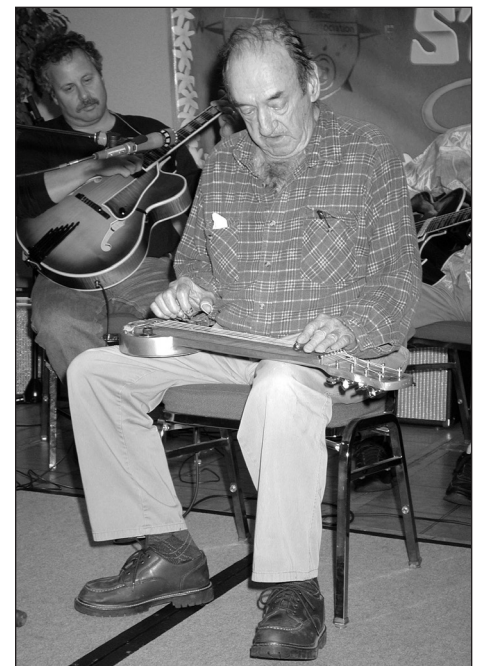
and steel, respectively, we THINK!) charmed us with their harmony and humor. Y'all come back, girls.

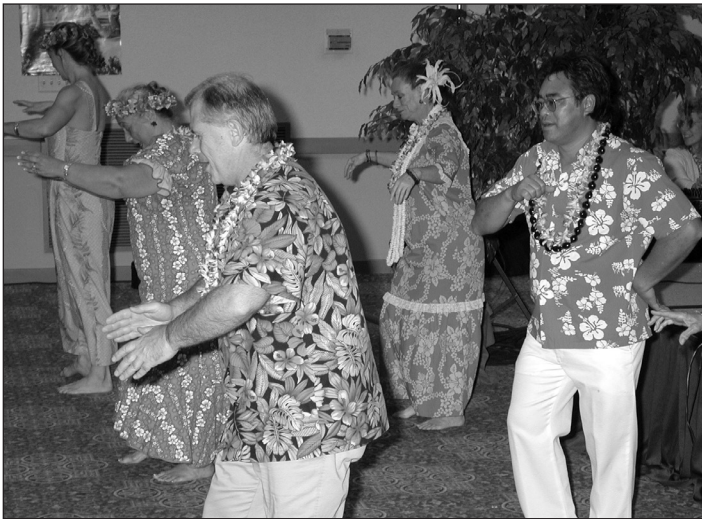
Another first-timer in the lime-light with 'ukulele, vocals, and hula was **Maelani Cazimero Wilcox**. What great talent! Made us think we had died and gone to heaven!

Guest artists are expected to be magnificent, terrific, and dynamic, right? Well, **John Ely** proved his mettle—our guest artist was all of that. He invited us to a Hukilau, introduced us to Rose of Waikīkī, danced us through three hulas, gave us a Yellow Ginger Lei, said that he wanted to Learn to Speak Hawaiian, and then outlined the Silhouette Hula.

He hardly began to march us through "Under the Double Eagle" when it was too much for the area transformer. It "blew" all the light out and the Double Eagle landed (until further notice, Dear John promised). Next day his nimble fingers kept his promise and the Eagle flew again!

Whether on stage or jamming after hours, Bill Schmiedlin shows that he's still got it!





Awesome hula at the Saturday Night show: Gloria Murawsky (left), Maelani Wilcox, Mike Beeks, Leigh Bell, and Kamaka Tom.

After dinner on Friday, John conducted a scheduled two-hour seminar covering everything from pickin' to pluckin'; from strummin' to strokin'; steel bars, plastic bars; thin wire, thick wire, wound wire, and probably hot wire; short vibrato, long vibrato, or no vibrato. Man, John sure has a wealth of knowledge and experience—a fine teacher. And you can hear a pin drop when his steel guitar sings out.

Our faithful hucksters, **Vivian Bangs** and **Myrel Carr**, were again busy selling lottery tickets to support the Scholarship Fund. A total of \$234 will help some budding steel guitar student reach his or her goal. Nice going, gals.

Grateful we are, too, for all those raffle prizes and many hours put in by their creators: **Millie Tipka**, **Alma Pfeifer**, **Alvin** and **Belle Wood**, **Duke Ching**, **Cookie Isaacs**, **Kamaka Tom**, and **Melvin Lantaka**.

Thanks again to the Committee for asking us (Betty and Bo' Bahret) to be the lei greeters at the lū'au on Saturday night. We just l-o-v-e doing that! This year's lū'au was the largest yet with 132 people. The serving line in the outer hotel lobby area enabled us to squeeze in more tables. Cozy!

The all-star lū'au show began with an 'Oli (chant) by Kamaka Tom. He explained that the 'Oli is really about *Aloha* and the love it extends to everyone. Isn't that HSGA (**H**awaiian **S**pirit **G**oes **A**round)?

Many thanks to emcee **Bob Waters**, **Duke Ching**, **Isaac Akuna**, **Kamaka Tom**, **Gerald Ross**, **Floyd Alexander**, **Ian Ufton**, **Julie Waters**, **Maelani Wilcox**, and our guest artist, **John Ely**. They filled the room

with really great music, singing, and dancing. “Hip, hip, hurray” for the hula dancers: **Gloria Murawsky**, **Leigh Bell**, **Julie Waters**, **Maelani Wilcox**, **Mike Beeks**, and **Kamaka Tom** (yes, Kamaka Tom!).

Everyone say, “Hats off” to **Paul Weaver** who stood many hours on the platform to capture the whole program on video. But that's only the beginning of his job. Now comes the homework of editing all the tapes and hopefully putting together a 2002 video of the musical history of this great convention.

‘And a one, two, three’ for all those backup artists who kept the beat for those who practiced all year, planned a nice program, and courageously got up there on stage and played for us. To all of you, we extend a big *Mahalo Nui*. You added so much to the convention's success and the spirit of preserving Hawaiian music everywhere.

All good things must come to an end, and so did the convention. The curtain came down as we all joined hands in a huge circle and sang the Hawaiian goodbye song, “*Hawai'i Aloha*.”

So stay well and as Red Skelton would say, “God bless.”

P.S. A note about our President, Kamaka Tom. Did you notice how he made it a point to introduce himself to every individual? He said, “This is my only chance to see these members and say hello.” “They deserve to know who I am and what my plans are for HSGA.” How commendable—how sincerely dedicated he is. HSGA is in for a great year! ■

A super shot of Barb Kuhns and Doug Smith presiding over the sound at Joliet. One word for this year's sound... Superb!



Waikīkī Steel Guitar Schedule

The following schedule is incomplete, but will help Honolulu 2003 Convention goers get started. Keep your ears to the ground!

House Without a Key at the Halekulani Hotel, 5 – 8:30 PM.

- ❖ Mon/Tue – Alan Akaka and the Islanders
- ❖ Wed/Thu – Aloha Serenaders with Paul Kim alternating with Lem Aweau
- ❖ Fri – Po‘okela with Greg Sardinha
- ❖ Alternate Sat – Po‘okela with Greg Sardinha and Pa‘ahana with Kaipo Kukahiko
- ❖ Sun – Pa‘ahana with Kaipo Kukahiko

Waikīkī Beach Marriott Resort, 5:30 - 9 PM.

- ❖ Thu – Genoa Keawe and Her Hawaiians with Alan Akaka

The Willows, 11:30 AM – 1:30 PM

- ❖ Sat and Sun – Po‘okela with Greg Sardinha

Moana-Surfrider, Banyan Terrace, 5:30 – 8:30 PM

- ❖ Thu – Hawai‘i Loa with Eddie Palama
- ❖ Fri – Pu‘uhonua with Peter Ah Sing
- ❖ Sun – Pu‘uhonua with Eddie Palama
- ❖ Mon thru Wed and Sat schedule unknown – stay tuned!

Japan News

From Tom Ikehata Tohma

Mele Kalikimaka and Happy New Year! Thanks to the new HSGA website and Lorene’s letter of October 17, I made a 3-page profile of HSGA in Japanese based on the above information and sent them out. The results have been great. So far, I can confirm 13 new members and I hope to reach 20 before the convention.

The following Japanese musicians are planning to perform at the Honolulu 2003 convention:

- ❖ Tom and Setsuko’s group of six
- ❖ The Kawakita group of seven
- ❖ The Sato group of around 13, including guitar, bass, background chorus, and hula dancers
- ❖ Lion Kobayashi’s group of around ten or so.

So the total of Japanese participants will be nearly 40. Setsuko and I will act as interpreters for the Japanese guests at the convention.

The Japanese economy is still sluggish at present, but I will continue to contact companies in an effort to defray some of the cost of getting our musicians and members to the conventions.

Again, the new website and Lorene’s letter were a great help to make people in Japan who love Hawaiian music understand what HSGA is. I’ll keep everyone informed about convention participants and new members. Aloha! ■

It’s Dues Time Again!

Remember, HSGA’s membership year begins on July 1, 2003.

The Cumquat Hawaiian Project

**Hear:- Andy Iona, Dick McIntire, Augie Goupil.....
Like you NEVER heard them before!**

**This is the greatest collection of
Classic Hawaiian music on CD!**



**The magical sounds of yesterday's Hawaii,
lovingly restored in pristine digital sound!**

Cumquat Records, Melbourne, Australia.

P.O. Box 963, Central Park Post Office,
Burke Road, Malvern East, Victoria 3145

www.cumquatrecords.com.au

Steel Guitar Trends... Forward or Backward?

By Lorene Ruymar

Two events took place recently that gave us a look into the future of the steel guitar. First, the Folk Alliance Festival came to Vancouver for the first time. About 3,000 attended. We roamed the hallways of the hotel and hosted the group of **Owana Salazar**, **George Kahumoku**, and **George Kahumoku, Jr.** plus **Ledward Ka'apana** the best we could in spite of their being in demand most of the three days of the festival.

Most people had something strapped to their back. If it wasn't a fiddle, mandolin, or a banjo it had to be a guitar. Surprising to us was the popularity of acoustic steel guitars although very few were being played. It seemed they had brought them along hoping to find someone to learn from. You can bet Ledward was a popular fellow in that regard. He did not act like, "I'm a big time star. Don't bother me." He would sit down with a group that was playing casually in a hallway, and amaze them with his skill on their steel guitar. Hey, he even promised to come to our next Hawaiian convention and do the same for us. Anyway, my impression was that there's a new interest among folk musicians in the 6-string acoustic steel guitar. They're just looking for instruction.

The second event: Someone decided to promote an evening in a Vancouver bar/restaurant billed as "Western Swing Meets Hawaiian" and it was to showcase the local steel guitarists (no pedals). We were told there were 6 or 7 steel players in the Western Swing genre whom we'd never heard of, and they'd never heard of us. How exciting!

To start with, there was a very good article published in the city's artsy newspaper, which brought in a full house. Who was there on the "Hawaiian" side? Well, we had **Peter Bergen** who played steel beautifully with his gospel group. Then, **Art [Ruymar]** took his turn playing Hawaiian. I [**Lorene Ruymar**] played a mixture of Hawaiian and Western Swing, then **John Fatiaki** did an excellent Hawaiian show, which included a hula dancer. The audience was very enthusiastic.

On the Western Swing side there were some fine players but we also heard some steel playing that puzzled me, to put it politely. They weren't playing



Lorene Ruymar on stage at Joliet with "Pres" Kamaka Tom on bass, Art Ruymar on guitar, and Donna Miller on 'ukulele. Sweet!

Western Swing; maybe it was rock—I couldn't say. If my three-year old grandson were allowed to play my steel guitar, he'd scrape the bar up and down the strings full blast with no pattern and no attempt at playing a melody. That's how it was. It seemed to me that they had underestimated the steel guitar and took it for a toy or a sound effects gizmo. But the audience clapped and cheered, so I have to figure that I am out of touch with the modern sound.

The folk people were looking for instruction, but some of the aforementioned didn't think there was anything to learn. I've seen horses turn their ears backward, so a caricature of me would have to show my ears turned the same way. I listen to the past.

So, ladies and gentlemen, get your ears pointed forward and listen for the new sound!! But my ears... they stay where they are. You can't teach old ears new tricks.

P.S. The bar/restaurant is named Carnegis. We can honestly boast that we played in Carnegis Hall. What a night that was! ■

From the Editors

Our apologies to William Diablo for jumbling his name in the last issue! Also, we misspelled Roy Durand's name. Sorry! Let us know about any errors or delivery problems with your HSGA Quarterly. Contact us at: 45-600 Kamehameha Hwy, Kaneohe, HI 96744; Telephone: (808) 235-4742; email: hsga@lava.net. Mahalo nui loa!

SOME THOUGHTS FROM JB

“Reminiscing”

This June 15th past marked my 30th anniversary as a Hawai‘i resident! Where did all these years go??? That old line “time flies when you’re having fun” is one of the truer ‘truisms’ because each day; each week; each year seemed to offer a new challenge and I have always risen to the occasion when challenged. Of course, I was frightened half to death a couple hundred times, but still I plunged ahead. Not at all overly impressed by what I had already accomplished, I was still searching for more, more, and more. And that hunger has never been fully satisfied and now, never shall be.

But the memories!!! So many great moments that come and quickly go but stay firmly etched in my mind. Let me tell you about a few of them. Let’s begin with:

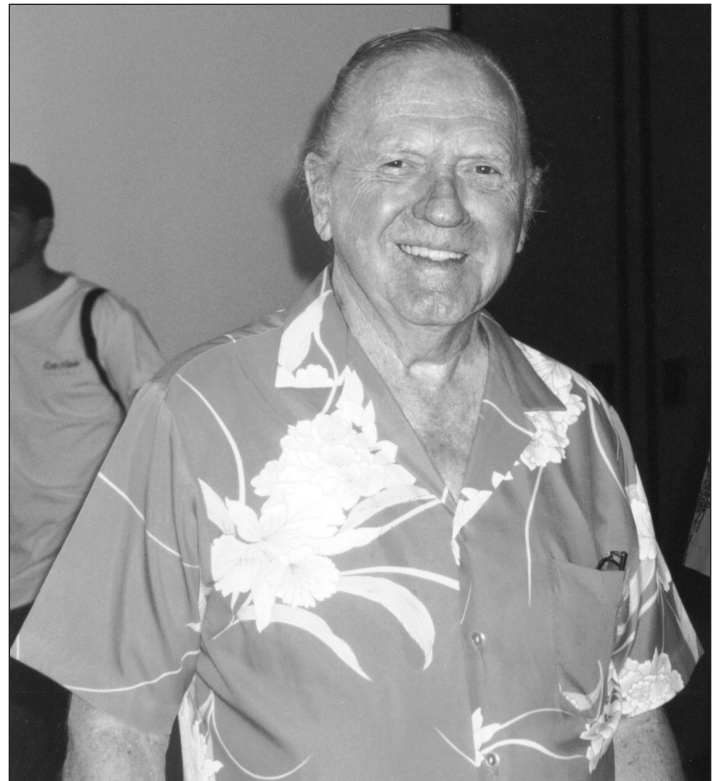
Recording Sessions

With some of Hawai‘i’s greatest musicians: Pua Almeida, Benny Kalama, Norman Isaacs, “Atta” Isaacs, and Barney Isaacs; Mel Peterson, Jimmy Kaopuiki, Sonny Nicholas, Sonny Kamahale, Harold Hakuole, Cy Ludington, and my “brothers” Hiram Olsen and Kalani Fernandes.

Doing over 60 albums with such “greats” as Nina Kealiwahamana, Melveen Leed, Aunty Irmgard Aluli, Myra English, Karen Keawehawaii, Bill Lincoln, Charles K.L. Davis, Gary Aiko, Genoa Keawe, Bill Kaiwa, Don Ho, and Kekua Fernandes to name only a few, and producing other LPs of David Kelii, Benny Kalama, and Ned Ka‘apana – plus four of my own. Unlike recording in Nashville, these were all “laid back” and fun!

Shows

- ❖ The Royal Hawaiian Hotel Lū‘au Show with Sonny Kamahale, Walter Mo‘okini, Benny Kalama, et al
- ❖ The Sheraton Lū‘aus with various groups
- ❖ The Danny Kaleikini Show with various groups at the Kahala Hilton Hotel
- ❖ The Royal Hawaiian Hotel’s Surf Room – 2 nights a week, 9 years
- ❖ Blue Dolphin Room at the Outrigger Hotel – 3 nights a week, 2 years



A nice shot of Jerry from the HSGA archives (we think this one was taken at the 2001 Ho‘olaule‘a).

- ❖ Ala Moana Hotel lounge and poolside
- ❖ The Halekulani Hotel’s House Without A Key with Hiram Olsen, Kalani Fernandes and Kanoe Miller – 3 evenings a week, 3 years

Plus dozens of “casuals” on all the islands. And those great shows—our “Steel Guitar Ho‘olaule‘a” for eight years—each one a true event and always great fun!

And yet there is one that still stands out as an event also—a Sunday afternoon at the Wharf in Hawai‘i Kai with Andy Cummings and Gabby Pahinui. I would see Andy very often and during one of our conversations, I casually said that I would like to come out one Sunday and “sit in” with them. I would see Gabby at the shopping center and we kept saying that we should play together at least *once*, so this was that opportunity.

Of course the place was packed with Gabby’s many fans, all highly enthusiastic. It was the “shortest” four hours I ever played and when we were leaving I was talking to Gabby in the parking lot and he said, “Eh, Jerry, come back again – soon! It was great fun.” I promised I would, but he passed away only a few weeks later—I treasure that day.

Japan

Being great lovers of Steel Guitar, I was very much 'at home' in Japan and made 39 trips to do shows, seminars, and recordings. The recordings were with their top singers of Hawaiian music: Ethel Nakada, Kaori Etoh, Kaoru Minami, The Okadas, et al, done both here and in Japan. *No one* loves steel guitar and Hawaiian music more than they.

Add all this to two trips to Australia and one to New Zealand.

All of us who are old enough to remember these "greats" of the '40s, '50s, '60s, and on have only their recordings to take us back to those golden years of Hawaiian music. Our Hawai'i, the Hawai'i we dreamed of, is gone sadly. Gone

because those lovely people who made it so are gone.

I was fortunate to have "arrived" in time to be a small part of it by getting to play with "Hilo Hattie," Sol Bright, Sterling Mossman, Sonny Chillingworth, and so many others whose names will be with us always.

I hope my luck continues and I can be with them again – wherever they are. I can hear them now.

"JB"

With this piece I shall conclude this series and let some one else use this space – how about you?

I hope you have enjoyed my ramblings (and ravings) and much aloha to all of you.

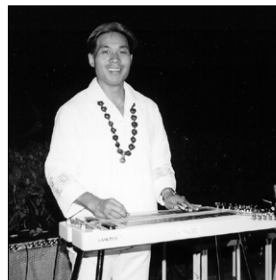
A warm aloha from the editors to Jerry for "yeoman's duty" cranking out timely, quality articles for the Quarterly issue after issue over the past few years. Stay in touch, Jerry, and if you ever get the "itch," know that there's always room for you on these pages. Mahalo nui loa, Manu! ■

Delivery Problems?

Please let us know of any problems with delivery of your HSGA Quarterly. If you are moving, please keep us informed for uninterrupted delivery of your Quarterly. Contact us at: 45-600 Kamehameha Hwy, Kaneohe, HI 96744; Telephone: (808) 235-4742; Fax: (808) 235-9591; Email address: hsga@lava.net. Mahalo nui loa!



*"CANOPUS
has the best
harmonics"*
Charlie
Fukuba



*"I want a
steel guitar
that sounds
sweet...
CANOPUS is
it — "*
Alan Akaka

CANOPUS

STEEL GUITAR TOUCH & TONE

TOP OF THE LINE ... CHOICE OF THE STARS.

Available Models:

In 8 strings
YS-8DS, Double neck
YS-8S, Single neck
YL - Lap steel, single neck
YS - 6, 7, or 8 strings, single neck with 4 legs, case

For specifications, prices, contact:

HAWAII - CHARLES FUKUBA
(808) 626-0691

US & CANADA - SCOTTY'S MUSIC
(314) 427-7794
Fax (314) 427-0516

EUROPE & PACIFIC RIM

YASU KAMIYA, "PICKING PARLOR"

1-3-1 OHARA, SETAGAYA-KU, TOKYO 156 JAPAN

PHONE: 03-3465-0872 FAX: 03-3465-0589

WWW.DIN.OR.JP/ - CANOPUS/
E-MAIL: CANOPUS@DIN.OR.JP

MEMBERS' CORNER

Pete Kahele, Cerritos, CA

"I'd like to bring you current with all the going-ons here in Southern California. The annual *E Hula Mau* Hula Competition was held at the Long Beach Performing Arts Center on August 30 through September 1. Bernie Endaya was busy playing steel guitar for the Kanani Kalama Hula Studio. No show this time for Herbert Hanawahine who is traditional here. Duke Ching was also here, playing his triple-neck Fender while the audience was being seated for the competition.

"On October 19, we had our first 'Ukulele Festival here in the city of Cerritos. The turnout was great and we're already looking forward to and planning for next year's event. I'm one of the committee members and was in charge of Slack Key and Hawaiian Steel Guitar. The festival consisted of performances throughout the day followed by workshops.

"The workshops consisted of basic to intermediate hula, basic to advanced 'ukulele, slack key and let's not forget steel guitar. Duke, Bernie, and I represented HSGA. We performed on the main stage, each player doing a few songs.

"I had Duke front and center, and he did a great job as spokesperson for HSGA. At Duke's request, I even made up a small sign of the HSGA logo and placed it on stage during our performance and also used it during our workshop. Duke did a great job demonstrating the steel guitar during the workshop.

Chet Hogue of Beard Guitars proudly displays one of his dobros.



Duke Ching and Alyssa Archambault conducting the steel guitar workshop at the 'ukulele festival in Cerritos, California.

"Duke and I made handouts on the history of the steel guitar and made available HSGA membership applications, which included background on our organization, mission, newsletter, and website. I got some good input from Alan Akaka.

"Sam Nainoa's granddaughter, Alyssa Archambault, participated by playing her grandfather's Rickenbacher frypan, doing her rendition of "Akaka Falls."

"A special guest artist was also present at the workshop. He is a living legend, born in Hawai'i, and his name is Bill Tapia! This 94-year old musician is still performing, singing, and playing an awesome 'ukulele with beautiful chording and picking. In fact, he has a concert on November 9.

"Henry and Kenny Kamae, nephews of Eddie Kamae, presented Bill with a signed copy of Lorene Ruymar's book, "The Hawaiian Steel Guitar and its Great Hawaiian Musicians." Bill Tapia is mentioned in her book.

"When Bill was looking my steel guitar over, I told him that I got the guitar from Andy Iona's nephew. He got very excited and told me that Andy Iona gave him his first break in entertaining at the Royal Hawaiian Hotel! Anyway, that's it for now. *A Hui Hou.*"

Chet Hogue, Kittaning, PA

Chet Hogue was one of our first time attendees at the Joliet 2002 Convention. On Saturday afternoon he was taken by ambulance to one of our local hospitals. Here is a copy of his letter of 'Thanks' to HSGA well-wishers and members who came to his assistance:

“Hello to all HSGA Members. Many thanks for all your help and concerns. A heartfelt thanks to all. I apologize for not getting back to you, but my email has been down. Since I’ve been home my health is fine and have visited my doctor in Pittsburgh. Please be so kind as to pass along my heartfelt thanks to all. I’ll be in touch as soon as my email is fixed. Take care.”

Don Weber, New Lenox, IL

Mahalo to all Joliet attendees for making the 2002 convention a great time for everyone. To Rose [Kitchen Vogt], *mahalo* for bringing Maelani [Wilcox] to Joliet. She was a delight and we look forward to seeing both of you again next year. Maelani became a member while she was there.

I wanted to bring you all up to date on Chet Hogue from Beard Guitars who came to Joliet to display guitars and wound up going to the hospital on Saturday afternoon.

He was operated on for a bleeding ulcer in the stomach. It had gone through the stomach wall and attacked an artery. It could have been more serious, but they got it in time. It’s not uncommon for this to occur without any pain or symptoms. They took him to the hospital about 3:30 PM Saturday, and by the time we started the Saturday Night Lū‘au, he’d been operated on and was awake and feeling quite comfortable.

After taking blood to elevate his red count, Chet was able to pick up his belongings at the hotel and make the trip back to Pennsylvania. Thanks to all HSGA members who helped move Chet’s guitars and suitcases to the hotel office on Saturday night.

Maurice Tuttle, Coffeyville, KS

“Aloha from Southeastern Kansas. I am not doing too much right now. I am getting over two broken shoulders. I had a fall the week before the Aloha International Convention but I am back playing again.

“The people here love the real Hawaiian Steel guitar. I play regularly for several nursing homes and churches in the area. I was 79 years old on August 2. My wife will be 75 on October 15.

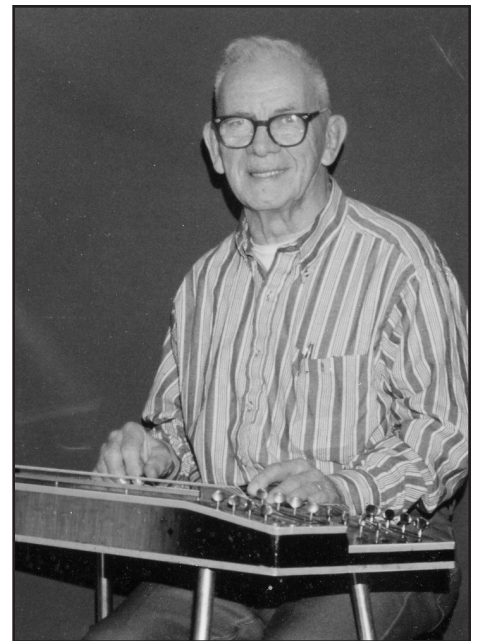
“My guitars are a Fender 3-neck, a Gibson Console Grand 2-neck, and a guitar I bought at Winchester, a solid walnut 8-string single neck with a Rickenbacker pickup. *Mahalo* to all and God Bless.

Gracia and Jerry Mulligan, Long Beach, CA

“Jerry and I want to say a big *Mahalo Nui Loa* for the card we received from the members at the Joliet Convention. We were terribly disappointed in having to miss the convention, the good friends, and the beautiful Hawaiian music. No one loves steel guitar music more than I.

“We had made plans and purchased airfare before Jerry’s doctor advised him against traveling because of back pains. So, in order to ease my disappointment, I randomly picked up a video of a previous convention and listened to the “stars” of that show – Harold Boggs, Neil Cosand, Edward Punua, Don Woods, John Fatiaki, and Rudolf Barten of Germany. The music was great but I’d much rather have seen them in person in Joliet.

“On October 19, there will be a ‘Ukulele Festival in our area (Cerritos and Artesia, California). Jim Beloff and Kukulele will enter-



Maurice Tuttle pictured here with his Gibson Console Grand double neck.

tain on uke as well as Bernie Endaya and Pete Kahele on steel. Uncle Henry Kamae and others will entertain from 7-10 PM after which will be a lū‘au concert in Artesia. The daytime festival and entertainment will be held at Tracy High School in Cerritos. We’re looking forward to some good steel playing by Bernie and Pete.

“Again, many thanks for the card. We love you all.” ■

It’s Dues Time Again!

Remember, HSGA’s membership year begins on July 1, 2003.

Mahalo, Members!

Keep those great letters and photos coming! YOU are the heart of our association. Please send news or comments to: 45-600 Kamehameha Hwy, Kaneohe, HI 96744; Phone us at (808) 235-4742. Remember, we now have a new Fax number: (808) 235-9591. This is a dedicated Fax line, so it’s always “on.”

Island of Palms

Arranged for the
E Major Tuning
Hi to low: E B G# E B E

Arrangement by George "Keoki" Lake

slowly [r] (no pick.....) 6 - - - [r] 6 5 6 8 6 5 - - - [r] 5 4 5 6 5

tacet (F Ddim) Gm7 (Db7) C7 F (Eb7) D7

To Coda (last time) I. (no pick.....) 2.

G7 C7 F tacet (F Ddim) F F7

6 [r] 8 10 - 6 6 10 5 5 5 3 1 [r] 3 5 [r] 3

Bb F F A7 Dm A7

1 [r] 3 5 10 5 8 = 8 7 8 [r] 1 3 6 (no pick.....) (no pick) 10 - 10 9 8 7

Dm G9 C7 Bb7 B7 C7 tacet (F Ddim) F Eb7 D7

RITARD.....

Gm7 F#7 F Fmaj7

24/11/01

Join Us in Maui!

Don't miss our neighbor island escapade following our May 2003 Honolulu Convention.

Why do we go to a neighbor island following our Honolulu conventions? Some are keen to see the sights of the other island but most of us have already been there/done that. Also, we're looking for a little more time to socialize with each other around the pool instead of being constantly on the run as we are in O'ahu.

But most of all, we go to the other island to promote the steel guitar with the local Hawaiians. Sure, it's fun to play in a shopping mall for the tourists, but we're not

accomplishing anything that way. That's why we have always stayed more in the area where the Hawaiians live, and we try to get their attention with our music. We want them to get their young people to learn to play and all that.

This year's trip is to Maui! Our last trip to Maui included a trip up Haleakala and down to Hana, a drive to Lahaina to take in a lū'au show featuring a local steel guitarist, and member performances in Ka'ahumanu Shopping Center, to name a few.

Contact Lorene Ruymar ASAP so we can plan accommodations and activities. You can let her know if you'll be taking a steel guitar or other instrument and would like to play, and what activities you'd like

the group to do together. Lorene will work on getting a group hotel rate once interested members start responding. **Please let Lorene know by February 28, 2003.**

Contact Lorene Ruymar at:
2090 West 44th Ave.
Vancouver, BC
Canada V6M 2E9
Phone: 604-263-8944
Email: ruymar@shaw.ca ■

Please Contact Us!

Send news or comments to: 45-600 Kamehameha Hwy, Kaneohe, HI 96744. You can phone us at (808) 235-4742. Note that our Fax number is (808) 235-9591. Email us at <hsga@lava.net> or check out our website (www.hsga.org).



Aloha Oe, Beautiful Kahana, Blue Hawai'i, Hana, Lovely Hula Hands, Hawaiian War Chant, Sand, Hilo March, South Sea Island Magic, Hanalei Moon...

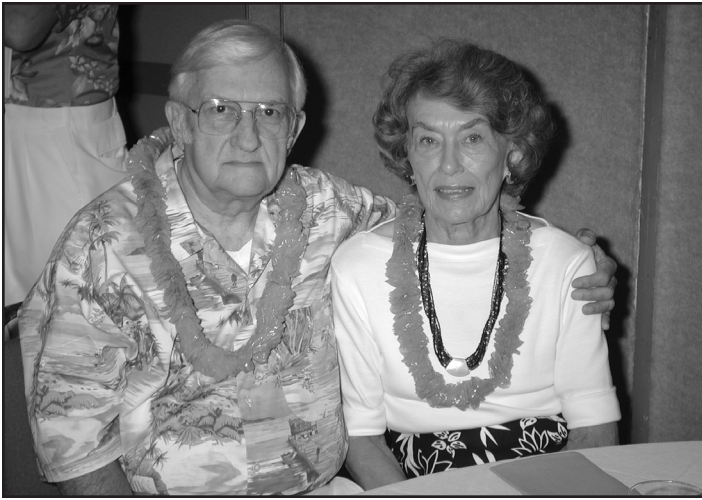
14 Additional Tracks

Hawaiian Steel Guitar Backup Tracks CD

- For practice or performance
- You play along and provide the melody
- 24 Favorite Hawaiian Songs
- Bass and Guitar accompaniment
- Great for vocals

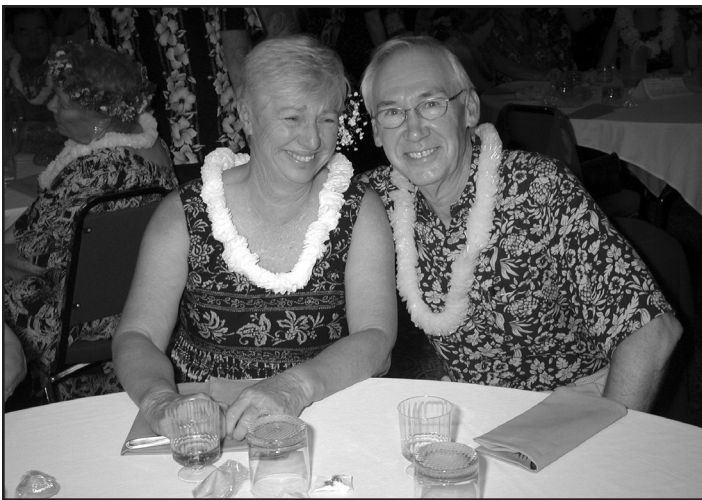
Send \$16 to:
Gerald Ross
P.O. Box 3245
Ann Arbor, Michigan 48106

Information, full track listing and free sample downloads available at:
www.umich.edu/~gbross
Email: gbross@umich.edu
USA sales only. Others please write or email.



Joliet is... Togetherness!

(Clockwise from upper left) Art and Mae Lang, Alma and Wally Pfeifer, Frank and Donna Miller, Dick and Donna Lloyd, "lei greeters" Bo' and Betty Bahret, Donna and Don Weber, Duke and La Verne Ching. Does HSGA have "heart" or what?!



DISC 'N' DATA

“The Hawaiian Steel Guitar of Bud Tutmarc”

CD Review By Wayne Shishido

I must admit to having heard the name “Bud Tutmarc” many times in this newsletter but, until recently, had never heard a recording of this fine musician. This CD contains 20 tracks showcasing Bud’s playing.

Bud Tutmarc has been playing the steel guitar since he was 6 years old. He is totally at ease with the instrument and material. He alternates between pop ballads, religious, and Hawaiian standards in a nice program mix.

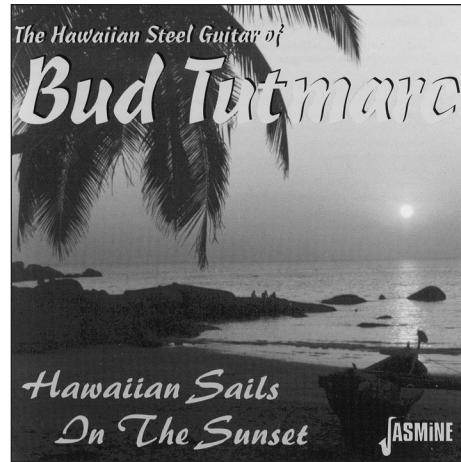
What immediately caught my attention was the sound of live string arrangements backing the steel on

this CD. Most impressive and not heard much anymore. Bud’s single-string melodies demonstrate his mastery of the instrument.

There is nice interplay between the steel and a harmonica on “Dream.” “Harbor Lights,” “I’m Getting Sentimental Over You,” and “Stardust” set the tone for a

relaxing evening. Versions of “Hilo March” and “Kohala March” pick up the tempo and provide a showcase for Bud to emulate one of his idols, Sol Ho’opi’i.

This CD is on the Jasmine Record label. Orders for the CD at \$15 US may be placed with:



*Bud Tutmarc
Marc Records
8514 Inverness Drive NE
Seattle, WA 98115-3961*

Delivery Problems?

Please let us know of any problems with delivery of your HSGA Quarterly. Contact us at: 45-600 Kamehameha Hwy, Kaneohe, HI 96744; Telephone: (808) 235-4742; email: hsga@lava.net. Mahalo nui loa!

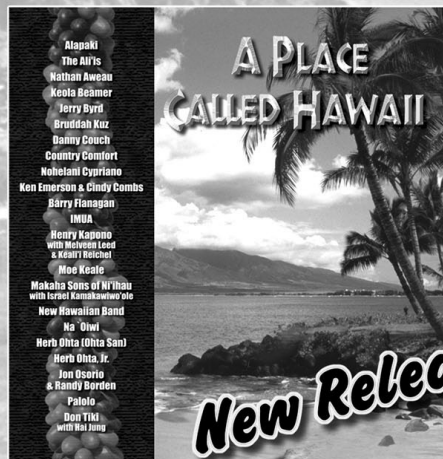
♪ Cord International & Hana Ola Records....

The Best in Hawaiian Music



**The Dean of
Hawaiian Music**

**OVER 40 OF HAWAII'S
GREATEST ARTISTS**



**Available nationwide
in selected stores!
Or visit our website for
song samples & ordering info.
www.cordinternational.com
Or Call: 877-648-7881**

COCO WIRE

Last November member **George “Keoki” Lake** was featured on Edmonton radio station CKUA, which was celebrating 75 years on the air. CKUA is Canada’s oldest educational/public radio network. Keoki and band performed a half hour of Hawaiian music and did an interview. Yeah!

Keith Haugen and member **Carmen Haugen** continue to stay busy and have done some recording and performing with member and guitarist extraordinaire, **Gordon Freitas**. Try catch ‘em!

As usual, member Ha‘alilio Heyer is a “blur” around Waikīkī keeping **Casey Olsen** and other steel players busy.

The U.H. library at Mānoa just received a bequest of more than 2,500 Hawaiian music recordings

New or Changed* Email Addresses

Just got email? Contact us at hsga@lava.net so we can add you to our member email directory. Mahalo!

Carolyn J. Chandler (US-AR)

Vernon M. Eide (US-MN)

John Ely (US-MN)

Ed Gagnon (US-FL)

Alex W. Greig (Canada)

T. Sage Harnos (US-MN)

John Hatton (US-MI)

Chet Hogue (US-PA)

Larry and Lyla Laing (US-NM)

Stewart Pearson (UK)

Don Stewart (US-CA)

Kamaka Tom (US-HI)

Maelani Wilcox (US-CA)

ladycarolci@aol.com

veide1@mn.rr.com*

johnely@hawaiiansteel.com*

STLEDG@AOL.COM

awgreig@shaw.ca*

sage@harnosmusic.com*

cleffd_ear@yahoo.com

cheth@beardguitars.com

lyla@dftech.com*

yvonnepearson@FreeNet.co.uk

alohaspiritinc@cox.net

tomg007@hawaii.rr.com

kohalawahine@aol.com

from the estate of **James Cathro** of Glaskow, Scotland. Mr. Cathro collected the recordings over a long period of time with a special focus on steel guitar music. He was

acknowledged in Dr. Kanahale’s book, *Hawaiian Music and Musicians*, for helping compile a discography of Hawaiian music in England. ■

THE ALOHA RADIO NETWORK

Aloha JOE®

The Music of Hawaii – All Day, Every Day!

Live Twice a Week! – “*Pau Hana*” Friday Show, 4-6 PM

Regular Saturday Show, 7-10 AM

www.alohajoe.com

Visit our online store – CDs and DVDs at Discount Prices

Email: alohajoe@alohajoe.com – Tel: 562.925.3711

Meet Your “Freshman” Board Members!

The following members have just begun their first term on the HSGA Board. Congratulations! We asked each of them to write a few paragraphs so you can get to know them better. Here goes...

Joanne Hanawahine

“My name is Joanne K. Hanawahine. After working for the State of Hawai‘i as a School Administrative Service Assistant, I decided to retire in December of 1996 soon after my husband Herbert retired. After visiting our two daughters in Las Vegas we decided to make Las Vegas our temporary home. It is a new lifestyle for us but we are very happy living here. We made so many new friends that originally lived in Hawai‘i but moved up here during the last thirty years. They are wonderful people. We used to get together every Sunday and have jam sessions and all kinds of *onolicious* Hawaiian Kine food.

“I am not a musician but have been married to one for forty-two years. I dance the Hula and belong to *Na Mele Ohana*, which is a choral group here in Las Vegas. We are made up of people from Hawai‘i and we get together and sing the Hawaiian *Himani* songs in the churches that we are invited to attend.

“We sing for any occasion and of course Herb is on the steel guitar. I am also on the Board of Directors for the University of Hawai‘i Alumni Association after being the Secretary for four years. I also belong to a choral group. I do a lot singing but I enjoy getting together with my friends. I do community service with U.H. Alumni and Friends. We perform in Nursing Homes whenever we are asked to do so. Yes, we are very busy and loving it.

“I just recently produced a CD featuring Herb and went to Hawai‘i to promote it. Bookline will be distributing it in their stores. I live a very simple and full life. My greatest joy is sharing the meaning of *Aloha* to everyone that I come in contact with.”

Gerald Ross

“Five years ago I joined the HSGA after buying my first steel guitar. I had always been attracted to the sound of the Hawaiian music in general and steel guitar in particular. Having played guitar and other instruments for over 30 years I naively thought, “The steel guitar will take me about two weeks to master; it’s no

big deal... all you do is slide the bar around.” Boy was I wrong!

“The major turning point in my learning adventure was attending the 1998 Joliet convention. In all my years of playing music I had never met a group of people more open, friendly, and willing to share information, playing tips, and encouragement than at that convention. I am still learning to play the Hawaiian steel guitar and will continue to do so my entire life. My thanks to each of you who gave me the opportunity to serve on the Board of Directors.”

Tom Ikehata Tohma

“I was born in 1936 and was exposed to a lot of Hawaiian music as a child, including the music of Sol Ho‘opi‘i. I am a self-taught musician, having taken up the ‘ukulele in high school and steel guitar during my college years. I continued playing steel guitar as a hobby throughout my professional career, which included positions with Wrigley Japan as President, Eastman Kodak Japan as G.M. of Consumer Marketing, and Spalding Japan as President and G.M. in the Far East. I retired in 1992.

“I have been an HSGA member since 1985 and was pleased to emcee and act as interpreter for Jerry Byrd in 1979 for his second Tokyo concert. I plan to visit Hawai‘i with my wife to perform for Steel Guitar Week. See you in Waikiki!” ■

New Board Member Gerald Ross (right) and “veteran” Isaac Akuna are all smiles at Joliet this year.



“TECH TIPS” FROM JOHN TIPKA

Welcome back, John! It's been too long. Here's a question posed by one of our HSGA website regulars.

Question: I saw your 'standby switch' article on the HSGA website. I own several Fender amplifiers. Two of them make a thumping noise when you turn the standby switch on. The other amplifiers don't do it. Is there something wrong?

Answer: Don't worry about the thump. When you turn on the standby switch you are shutting off the high voltage to the power amplifier tubes. The magnetic field in the primary of the output transformer decays and induces a counter-electromagnetic field into the secondary of the output transformer. The amplifier's speaker voice coil is connected to the secondary of the output transformer. The thump you hear is the magnetic field decaying through the voice coil. It won't hurt the speaker.

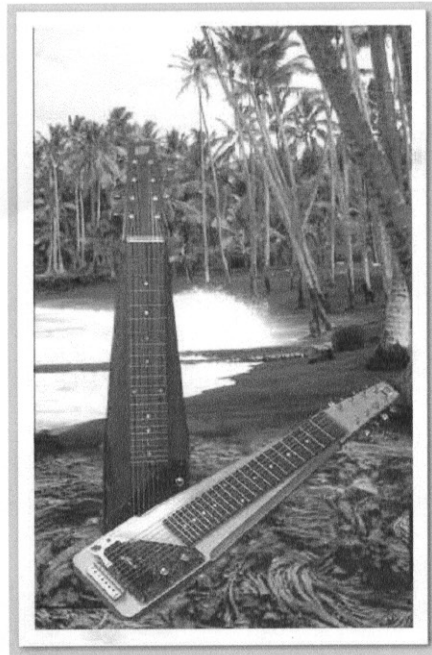


A nice shot of Millie and John Tipka taken at Joliet. John's technical knowledge of electronics and guitar construction has been a great help to players and aspiring builders alike.



West Coast
Steel Guitar
1213 Lindell Dr.
Walnut Creek, CA 94596

Vox/fax 925-935-9255



Quality Lap Steel Guitars

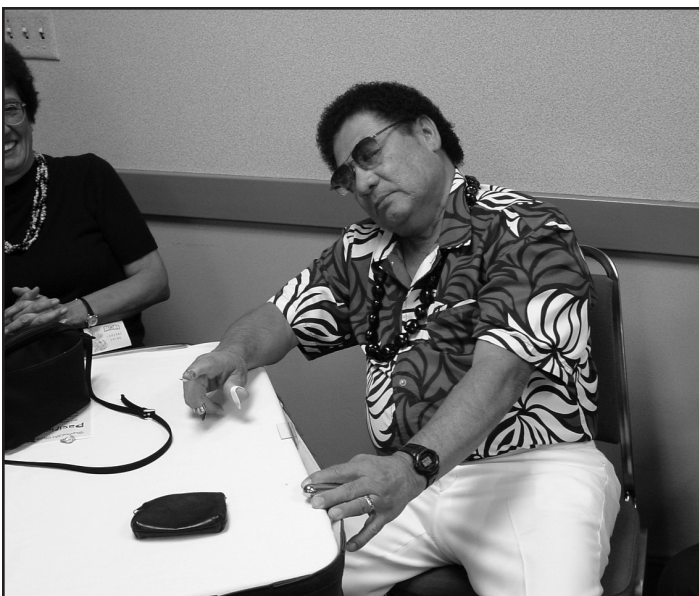
- Clean Balanced Tone
- Enhanced Sustain
- Six and Eight-string models
- Quality woods and Components
- Resophonic Guitars
- Custom Acoustic and Electric Guitars

www.pedalsteel.com/westcoaststeel



Joliet is... Music and No Sleep!!

(Clockwise from upper left) a nice shot of Bernice Honold playing her lovely National console; Virginia Grzadzinsky fearlessly playing with a broken ankle; Maurie Junod on a pretty double-8 steel guitar; the Joliet audience—a full house of steel guitar addicts (you're hired!); jet-laggin' President, Kamaka Tom, catching some well-earned shut-eye; and Duke Ching—is he asleep or hamming it up for our cameraman, Paul Weaver? Hmm...



HSGA Donations

Thanks HSGA members for your contributions this past quarter. Our scholarship fund continues to grow along with our membership, a good sign as the world economy continues to struggle!

A big *mahalo nui loa* to those who have made very generous, anonymous contributions.

The following members donated at least \$10:

Dale and Louise Nightwine, Kansas City, KS
 Beat Iseli, Winterthur, Switzerland
 J. Ha'alilio Heyer, Honolulu, HI
 Bernie Magness, Grass Valley, CA

Dues Reminder

Remember, HSGA's membership year begins on July 1, 2003.

BUY & SELL

Instruments Wanted

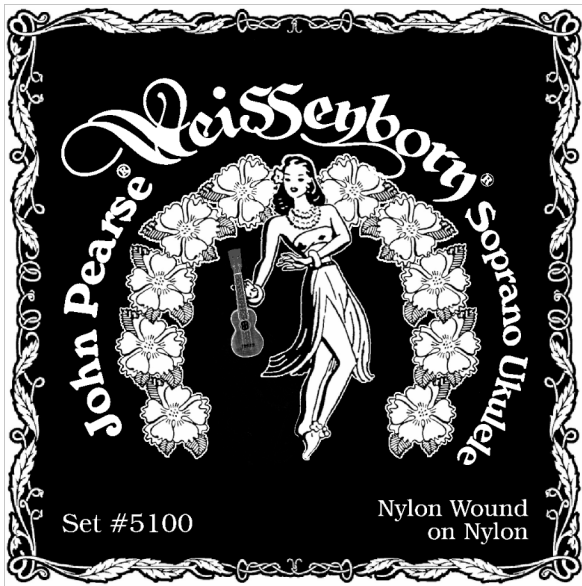
Wanted continuously by Michael Cord for his awesome collection: All models of vintage lap steels (like Hilos, Konas, Weissenborns, Rickenbackers), vintage amps and basses. Contact Michael Cord toll free at (877) 648-7881.

Photo Wanted

Member Roger Shackelton became a Linda Dela Cruz "convert" after listening to some out-of-print recordings from this fabulous singer. If anyone has photos of Linda, please contact Roger at P.O. Box 3802, Everett, WA 98203; Email: copedant@gte.net



Washington, DC resident, Frank Della-Penna, playing another fine set at Joliet this year. Smooth, baby!



New! John Pearse® Ukulele Strings!

These professional-grade Ukulele strings have been re-created according to exact specifications provided by the late, great **Benny Kalama**. Unique in construction--every string is wound--they have been designed to provide the Ukulele soloist with clear, crisp tone and extended string life. We believe it is the finest string set ever made for the instrument...

We hope you will agree!



Don't forget our 6 & 8 String Hawaiian Steel Sets!

#7300 Am .016, .018, .022, **.032, .046, .054**

#7310 Am⁷ .016, .018, .022, **.026, .032, .046**

#7500 Am⁷ .016, .018, .022, **.026, .032, .038, .046, .054**

#7600 C⁷ .016, .018, .022, **.026, .032, .038, .046, .070**

www.jpstrings.com

Breezy Ridge Insts., Ltd., PO Box 295, Center Valley, PA 18034 800/235-3302 Jpinfo@aol.com

CLOSING NOTES

Sad to report, Hawaiian music has lost another of its illustrious composers and performers. Thanks to Pat Gee of the Honolulu Star-Bulletin for the following:

“**Randy Oness**, a big-band musician and composer of hapa-haole songs that popularized Hawaiian music in the 1930s and ‘40s, died Thursday [December 5] at Castle Medical Center. He was 92.”

Gaye Beamer called his death “a loss of another Hawaiian treasure.” “Dear, sweet Uncle Randy” was close to the Beamer entertainment family most of his life, and he “conveyed his happiness to see you. His face would light up and his eyes would twinkle. He absolutely delighted in playing the ‘ukulele and singing songs for you,” Beamer said.

Oness, a 1930 graduate of the Kamehameha Schools, wrote more than 200 songs, including the popular “Lovely Hula Girl” and “Hawaiian Hula Eyes.” He played music “until he was in his 80s. After all his musicians died, he stopped. He was the last of the old-timers to go,” said Beamer.

Oness was part of the original Harry Owens Band, the Royal Hawaiians, and played at the Queen’s Surf and Alexander Young hotels with his own nine-piece band. He won a Nā Hoku Hanohano Lifetime Achievement Award in 1999.

Oness took part in the famous “Hawai‘i Calls” radio show and performed on a KGMB radio program with vocalist Ray Kinney.

Randy Oness and his Select Hawaiian Serenaders included the legendary Alfred Apaka and other

well-known artists such as Pua Almeida and Alvin Kaleolani Isaacs. Oness also produced and led the band in albums featuring Apaka for Bell Records and Aloha Records in the late 1940s.

Oness wrote the song “Huanani” for his daughter. Haunani said her father played every musical instrument, but his favorites were the saxophone and clarinet. “My father was a draftsman during the day (with Hawaiian Telephone and the federal government) and a musician at night,” she said.

The following comes from member Goerge “Keoki” Lake:

This Christmas has [also] been marred by the very sad news of the passing of **Lani Moe**, the beloved son of **Tau Moe**, at the age of 73. Those of you who knew Lani, knew

him as a very happy, loving individual, completely devoted to his parents, the late **Rose Moe** and **Tau** who is now 93.

Lani had exceptional talents in music and could play most any brass or reed instrument in a Big Band. He was a superb show dancer (and show stopper!), ballroom dancer, hula dancer, and costume designer for the **Tau Moe Family European TV Spectaculars** and the **Polynesian Cultural Center** evening shows in **Lai‘e**.

Lani is survived by his father **Tau** and **Tau’s** daughter, **Dorian Moe**, who both live in **Lai‘e**. **Tau** took his family around the world seven times, entertaining and promoting Hawaiian music as the **Tau Moe Family Aloha Four**. **Mary** and **I** will deeply miss our visits with **Lani**, his laughter, humor and musicianship and above all, his sincerest friendship. ■



LAP STEEL GUITARS STUDENT & CUSTOM MODELS

Introducing affordable, high quality
US-made steel guitars, based on vintage
designs. All models feature:

- Beautiful tone & outstanding sustain
- One piece hand-crafted solid tonewood bodies
- Custom-made all-metal nuts and bridges
- Nickel-plated tuners
- Hardshell case included!

Choose from a wide selection of pickups and fretboard decorations. Inlaid nickel-fretted rosewood or ebony fretboards available.

Prices start at only \$179. Also visit our website for:

- Lap Steel Bodies
- Fretboards & Parts
- Strings & Accessories
- Lap Steel Kits

Music Crafters
PO Box 205
Weatherford TX 76086

www.musiccrafters.com
gary@musiccrafters.com
Toll Free: 800-720-8355

E komo mai! Welcome, New Members

Is your address and email correct? Please notify us!

UNITED STATES

KENNETH AUTENREITH, 1206 Semor Dr., Decatur, IL 62521

JAMES BAECKER, 4285 Jefferson St., Deephaven, MN 55331

CAROLYN J. CHANDLER, 602 Hardin Street, Van Buren, AR
72956

ED GAGNON, 4054 Crayton Rd., Naples, FL 34103

JOHN HATTON, PO Box 13075, Lansing, MI 48901

CHEM HOGUE, RRD2 Box 81, Kittanning, PA 16201

BILL HOKE, 363 Bradley St., Abingdon, VA 24210

HAROLD L. SAMPSON, 5832 N Rockwell St., Chicago, IL 60659

DON STEWART, 34772 Doheny Pl., Capistrano Beach, CA 92624

MAELANI WILCOX, 7961 Beaver Lake Drive, San Diego, CA
92119-2610

JAMES ZIKES, 9016 W. 117th Terris, Overland Park, KS 66210

OVERSEAS

WILLIAM J. TURNER, 8 Barrett Road, Whalers Gate, New
Plymouth, New Zealand

JIM HASSALL, 162 Heta Road, New Plymouth, New Zealand

CLIVE MCLEOD, 32, Meadowfield Rd., Rubery, Rednal,
Birmingham B45 9BZ UK

STEWART PEARSON, Glenesk Cottage, Lhanbryde, Elgin, Moray,
Scotland IV30 8LN UK

April 2003 Honolulu Convention Calendar

Saturday, April 26

Ala Moana Shopping Center, Center Stage,
Noon – 1 PM.

Sunday, April 27

Ho'olaule'a, Ala Wai Golf Clubhouse; Time: TBA.

Monday, April 28 – Wed, April 30

Honolulu Convention, Queen Kapi'olani Hotel,
Ākala Room.

Thursday, May 1

May Day celebration with the Honolulu City and
County; Time: TBA.

Saturday, May 3

Waikīkī/Kapahulu Library; Time: 11 AM – 1 PM.

*Please note that all playing times and locations are subject
to change.*

HSGA Quarterly – Winter 2002-03

The Hawaiian Steel Guitar Association

45-600 Kamehameha Highway, Kaneohe, HI 96744

ADDRESS SERVICE REQUESTED

NON-PROFIT ORG.
U.S. POSTAGE
PAID
HONOLULU, HI
PERMIT NO. 9129